



Noise Monitoring Result

Day Time (0700 - 1900hrs on normal weekdays)

Location: M1a - Harbour Road Sports Centre

Date	Time	Weather	Measurement Noise Level			Baseline Level	Construction Noise Level	Limit Level
			Leq	L10	L90	Leq	Leq	Leq
Unit: dB(A), (30-min)								
29/03/16	15:00	Fine	82.9	86.0	76.5	72	83	75
06/04/16	10:45	Fine	76.5	77.5	74.0	72	74	75
12/04/16	10:32	Cloudy	80.2	80.5	73.5	72	79	75
19/04/16	08:30	Fine	76.5	77.5	75.0	72	74	75
25/04/16	08:55	Fine	76.5	78.3	74.0	72	74	75

Location: M2b - Noon-day gun area

Date	Time	Weather	Measurement Noise Level			Baseline Level	Construction Noise Level	Limit Level
			Leq	L10	L90	Leq	Leq	Leq
Unit: dB(A), (30-min)								
29/03/16	10:22	Fine	68.1	69.5	66.0	68	58	75
05/04/16	15:58	Fine	68.7	70.0	66.0	68	62	75
12/04/16	13:00	Cloudy	66.8	68.0	65.0	68	67	75
19/04/16	09:15	Fine	69.0	70.0	67.5	68	63	75
25/04/16	09:49	Fine	68.4	70.0	65.5	68	61	75

Location: M3a - Tung Lo Wan Fire Station

Date	Time	Weather	Measurement Noise Level			Baseline Level	Construction Noise Level	Limit Level
			Leq	L10	L90	Leq	Leq	Leq
Unit: dB(A), (30-min)								
30/03/16	14:43	Fine	65.8	67.0	63.5	69	66	75
06/04/16	13:15	Fine	68.5	69.0	67.0	69	69	75
12/04/16	13:42	Cloudy	64.7	66.0	62.5	69	65	75
19/04/16	13:00	Fine	67.5	68.0	66.0	69	68	75
26/04/16	14:15	Fine	65.2	66.5	63.0	69	65	75

Location: M4b - Victoria Centre

Date	Time	Weather	Measurement Noise Level			Baseline Noise Level	Construction Noise Level	Limit Level
			Leq	L10	L90	Leq	Leq	Leq
Unit: dB(A), (30min)								
29/03/16	11:00	Fine	69.2	72.5	64.5	67	65	75
06/04/16	13:52	Fine	65.2	67.0	62.5	67	65	75
12/04/16	14:23	Cloudy	65.6	66.0	62.0	67	66	75
19/04/16	13:38	Fine	68.0	69.5	65.0	67	60	75
26/04/16	14:53	Fine	65.7	66.5	63.5	67	66	75

Location: M5b - City Garden

Date	Time	Weather	Measurement Noise Level			Baseline Level	Construction Noise Level	Limit Level
			Leq	L10	L90	Leq	Leq	Leq
Unit: dB(A), (30min)								
30/03/16	15:30	Fine	66.5	68.0	64.5	68	67	75
06/04/16	14:50	Fine	68.0	69.0	65.5	68	68	75
11/04/16	11:30	Fine	69.7	70.0	68.5	68	65	75
19/04/16	14:22	Fine	70.8	72.0	68.5	68	68	75
26/04/16	15:43	Fine	70.5	71.0	69.5	68	67	75

Location: M6 - HK Baptist Church Henrietta Secondary School

Date	Time	Weather	Measurement Noise Level			Baseline Level	Construction Noise Level	Limit Level
			Leq	L10	L90	Leq	Leq	Leq
Unit: dB(A), (30-min)								
30/03/16	16:08	Fine	71.6	72.5	69.5	71	64	70
06/04/16	15:30	Fine	71.6	72.5	69.5	71	64	70
11/04/16	10:17	Fine	72.3	73.0	70.5	71	67	65
19/04/16	15:00	Fine	71.9	73.0	68.0	71	66	65
29/04/16	14:30	Fine	68.8	70.0	66.5	71	69	70



Noise Monitoring Result

Day Time (0700 - 1900hrs on normal weekdays)

Location: M7e - International Finance Centre (Eastern End of Podium) (Reference Station)

Date	Time	Weather	Measurement Noise Level			Baseline Level	Construction Noise Level	Limit Level
			Leq	L10	L90	Leq	Leq	Leq
Unit: dB(A), (30-min)								
30/03/16	09:30	Fine	68.5	69.5	67.0	67	64	N/A
08/04/16	08:30	Fine	67.1	68.0	63.5	67	55	N/A
12/04/16	08:25	Cloudy	68.2	69.0	67.0	67	63	N/A
20/04/16	09:00	Fine	66.3	68.0	63.0	67	66	N/A
26/04/16	08:30	Fine	67.5	68.5	65.2	67	59	N/A

Location: M7w - International Finance Centre (Western End of Podium)

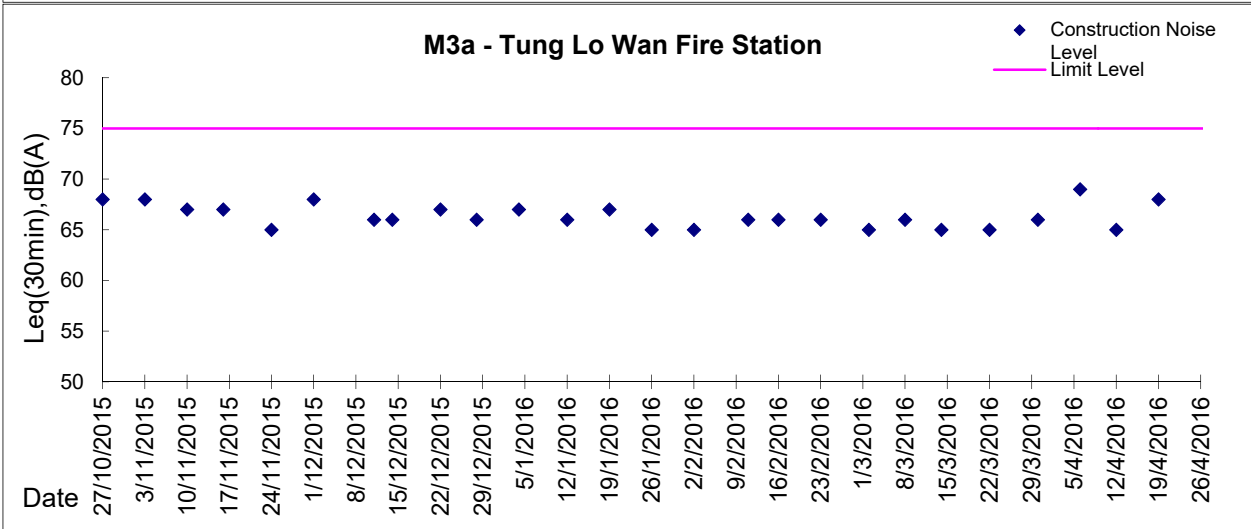
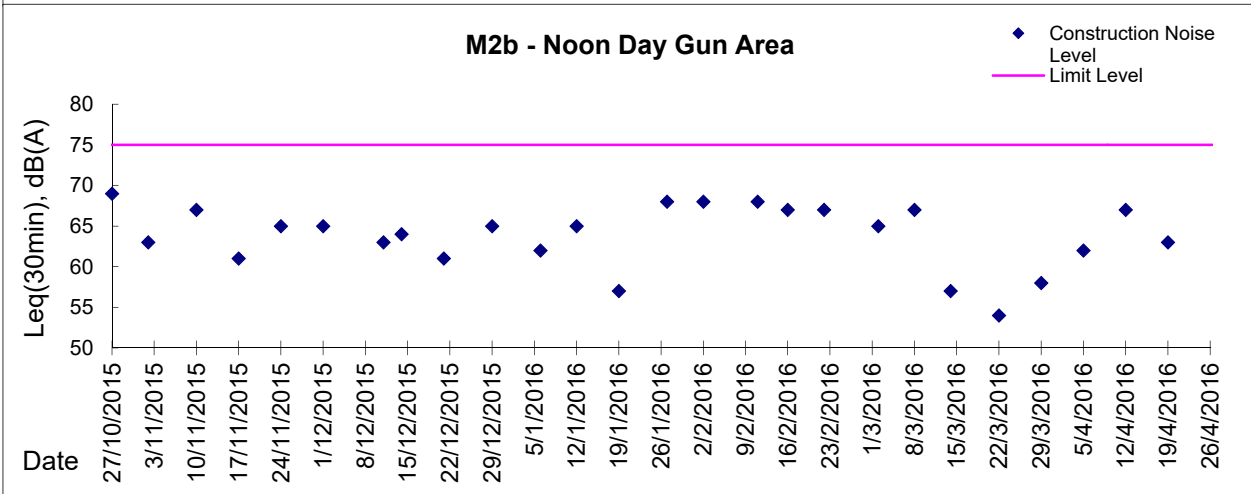
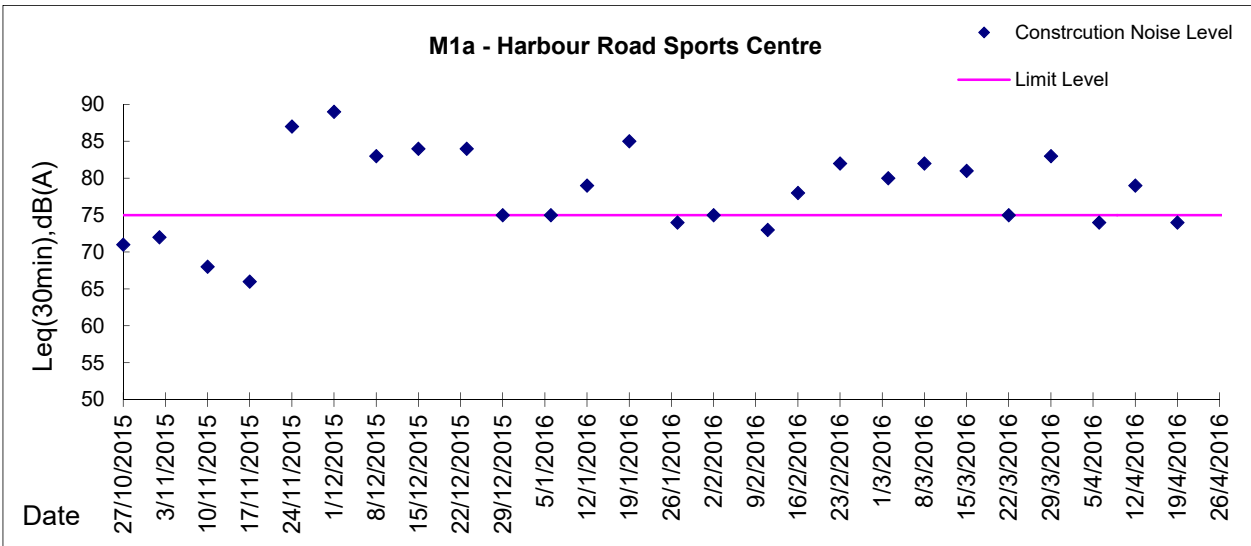
Date	Time	Weather	Measurement Noise Level			Baseline Level	Construction Noise Level	Limit Level
			Leq	L10	L90	Leq	Leq	Leq
Unit: dB(A), (30-min)								
30/03/16	10:32	Fine	66.5	67.0	63.5	69	67	75
08/04/16	09:05	Fine	63.9	65.5	61.0	69	64	75
12/04/16	09:00	Cloudy	67.5	68.5	65.5	69	68	75
20/04/16	09:45	Fine	66.1	68.0	63.0	69	66	75
26/04/16	09:35	Fine	66.0	67.5	63.0	69	66	75

Location: M8 - City Hall

Date	Time	Weather	Measurement Noise Level			Baseline Level	Construction Noise Level	Limit Level
			Leq	L10	L90	Leq	Leq	Leq
Unit: dB(A), (30-min)								
30/03/16	11:20	Fine	64.0	65.0	62.0	64	64	70
08/04/16	09:41	Fine	61.2	63.0	58.5	64	61	70
12/04/16	09:40	Cloudy	60.2	62.0	56.5	64	60	70
20/04/16	11:03	Fine	62.6	66.5	57.0	64	63	70
26/04/16	10:45	Fine	62.3	64.0	59.5	64	62	70



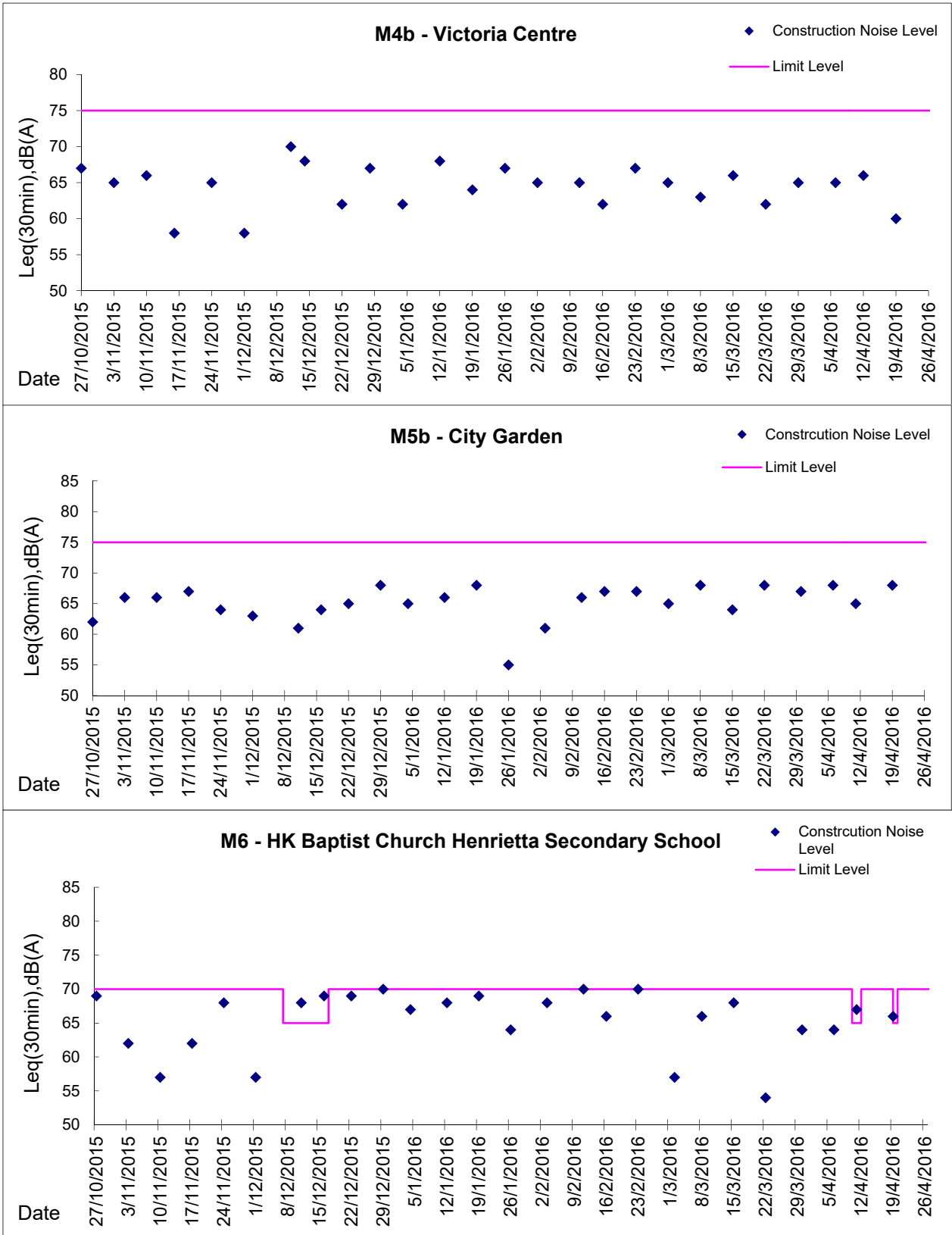
Graphic Presentation of Noise Monitoring Result
Day Time (0700 - 1900hrs on normal weekdays)





Graphic Presentation of Noise Monitoring Result

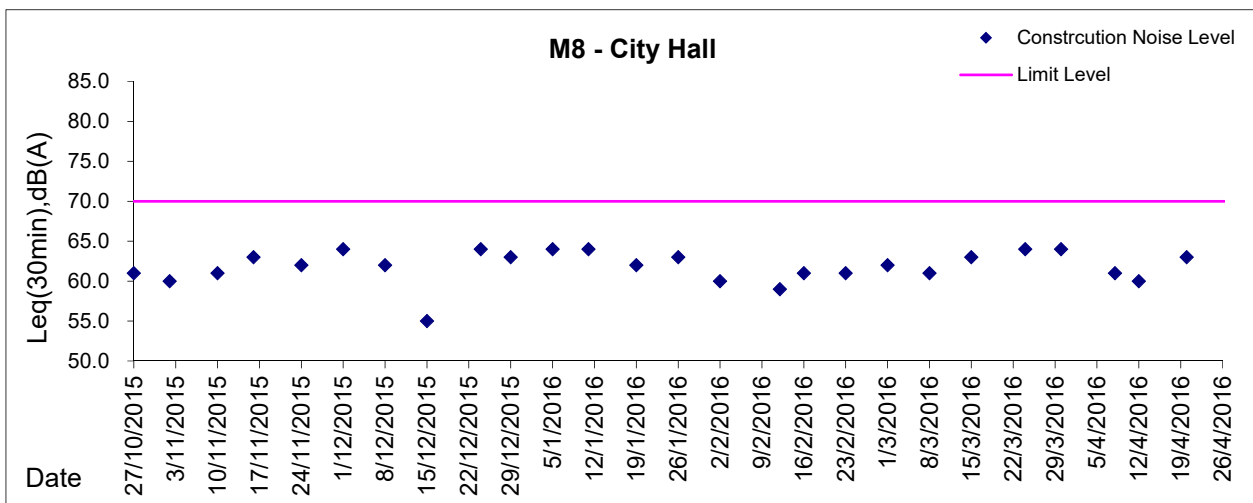
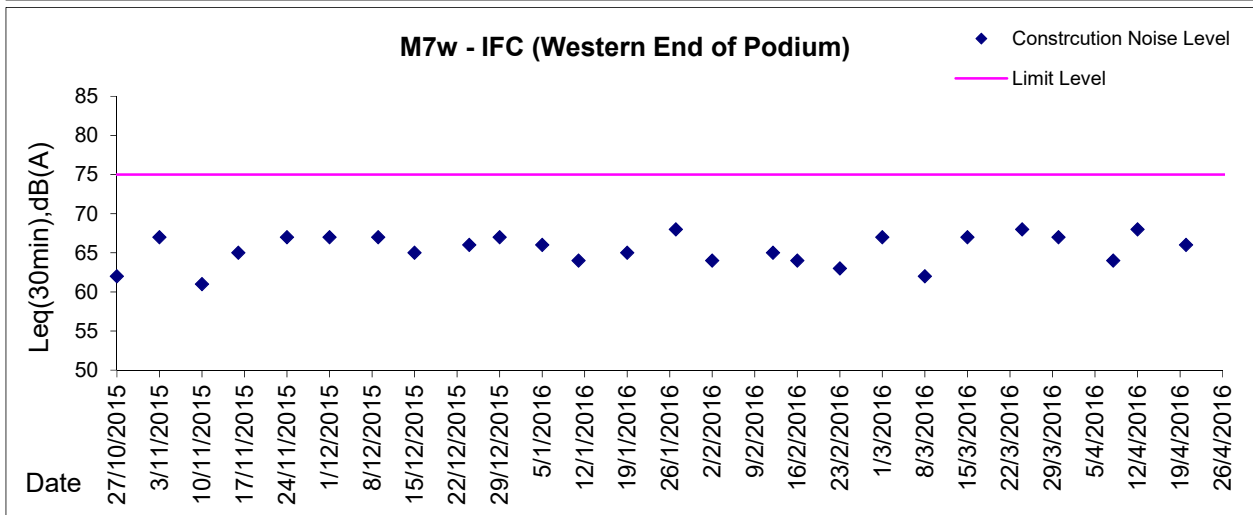
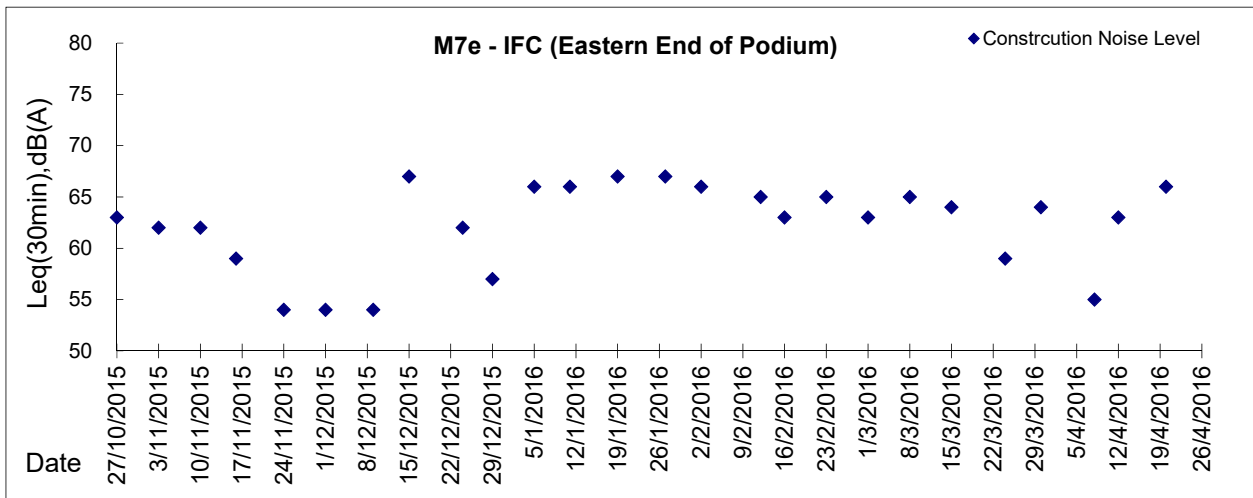
Day Time (0700 - 1900hrs on normal weekdays)





Graphic Presentation of Noise Monitoring Result

Day Time (0700 - 1900hrs on normal weekdays)



* Remark: M7e - IFC (Eastern End of Podium) is a reference monitoring station